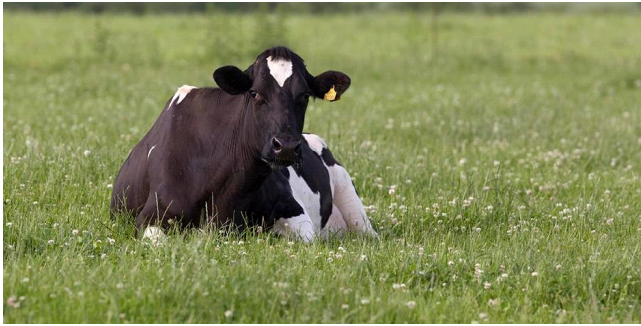


RIVENDEL

Trifolium repens

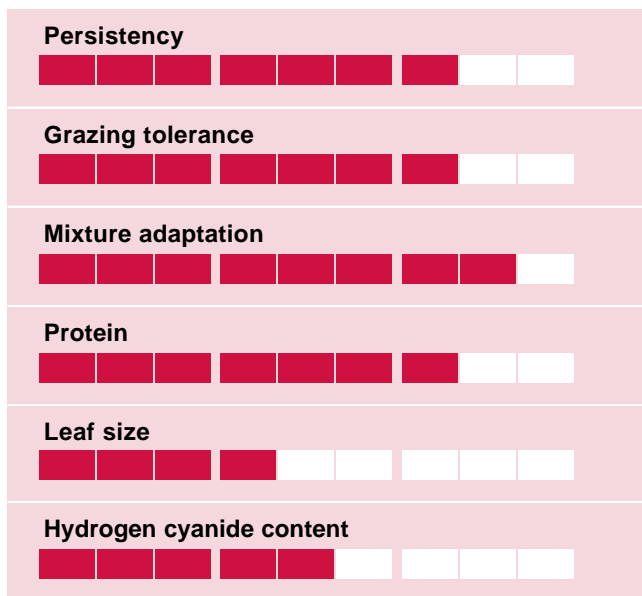


White clover

Small-leaved Grazing Type

- Small-leaved
- Adapted to grazing
- Perfect for permanent pastures
- High disease tolerance

Ratings



Variety Type

Trials show that small leaved white clover is most persistent in permanent pastures under a grazing management. RIVENDEL is a small-leaved very persistent variety. It has short rhizomes and short leaf growth, which makes it suitable for both cattle and sheep farming as it tolerates close grazing and maintains a high proportion of clover in the sward.

Winterhardiness

In several trails though out Europe, RIVENDEL has shown its excellent resistance against strong and cold winter conditions.

Yield

RIVENDEL has a good distribution of DM yields through out the season and years with high rel. yields compared to the standard variety in 3rd. and following years.

Disease Resistance

RIVENDEL has a good resistance to nematodes and clover rot (Sclerotinia), which also improves the persistence.

Relative drymatter yield

Source: Results from official trials in Denmark showing the drymatter yield

