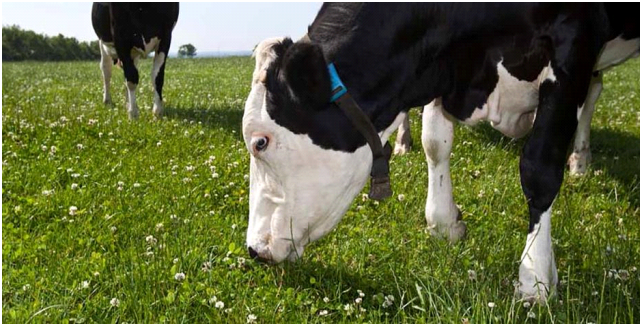


BUDDY

Trifolium repens

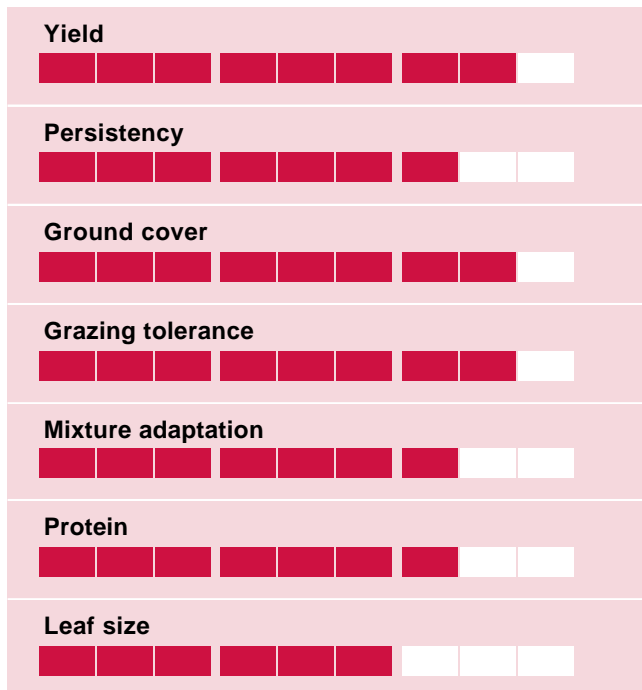


White clover

Incredible clover and grass yield

- Very high yield
- Perfect for mixing with ryegrass
- For grazing and combined management
- Tolerant to hard defoliation

Ratings



Ideal mixing partner

Buddy is a medium leaved variety of white clover with very good yield of both grass and clover in a mixture through much of the season.

Made for grazing

Buddy is very well suited for grazing due to its high persistence under hard defoliation - much better tolerance than normally seen for a variety with such leaf size.

Top yield

Buddy has in trials shown yield levels way above varieties of white clover with larger leaves and at the same time proven ability to fit perfectly into a mixture with perennial ryegrass.

The high yielding capacity is showing right from the 1st cut in the spring.

Relative yields and % clover in 2nd and 3rd year

Source: BGS RECOMMENDED LIST OF WHITE CLOVER VARIETIES 2015/2016

