

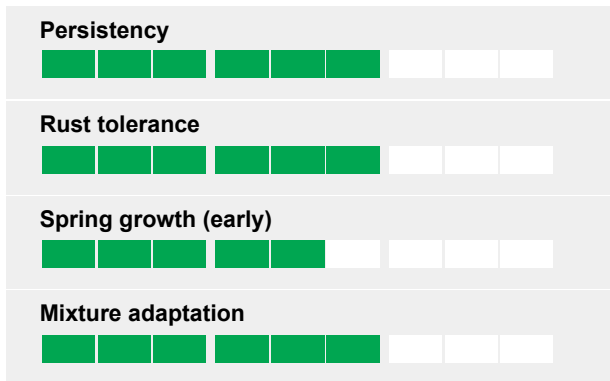


Westerwold/annual ryegrass

Conservation made easy

- 92 % bacterial wilt resistance
- Very high lodging resistance
- High dry matter for easy conservation
- Superior leaf spot tolerance

Ratings



Easy conservation

Whether for hay or silage MAGLOIRE is easing the procedure due to excellent lodging resistance, sufficient stems in the canopy and the higher dry matter percent characterizing diploids.

High quality protection

With very high resistance to bacterial wilt (*Xanthomonas*) - 92% res. plants with standards at 67-77%. The rust resistance is far better than most other varieties, the quality and safety of the forage production is increased. High resistance to *Drechslera* (leaf spot) further completes the wide resistance of MAGLOIRE.

Very big first cut

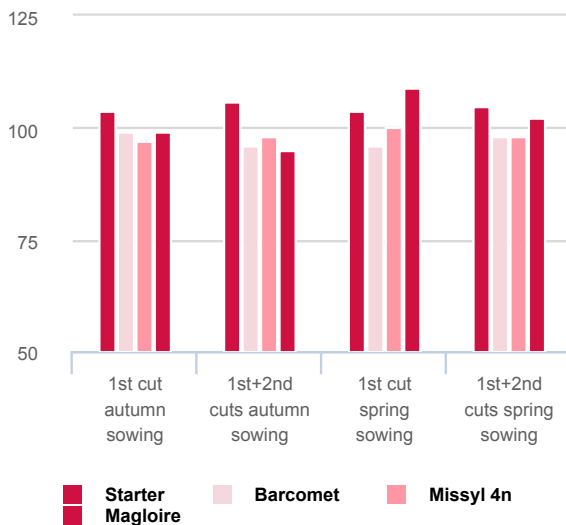
High dry matter yield right from the first cut after spring sowing or late autumn sowing.

Persistency

High production in the first cut in all conditions and the option to obtain one or two cuts more where needed.

Relative dry matter yields

Source: Official testing, Geves (France)



Lodging and rust resistance

Source: Official testing, Geves (France)

