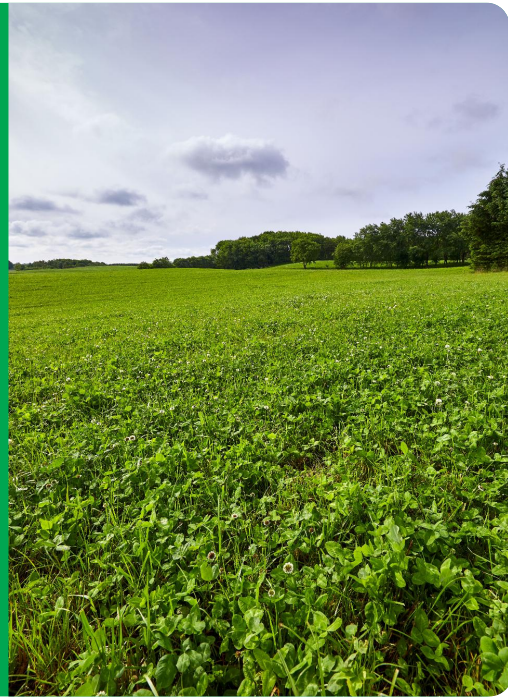


RIVENDEL

Trifolium repens

- Small-leaved
- Adapted to grazing
- Perfect for permanent pastures
- High disease tolerance



Variety Type

Trials show that small leaved white clover is most persistent in permanent pastures under a grazing management. RIVENDEL is a small-leaved very persistent variety. It has short rhizomes and short leaf growth, which makes it suitable for both cattle and sheep farming as it tolerates close grazing and maintains a high proportion of clover in the sward.

Winterhardiness

In several trials throughout Europe, RIVENDEL has shown its excellent resistance against strong and cold winter conditions.

Yield

RIVENDEL has a good distribution of DM yields throughout the season and years with high rel. yields compared to the standard variety in 3rd. and following years.

Disease Resistance

RIVENDEL has a good resistance to nematodes and clover rot (Sclerotinia), which also improves the persistence.

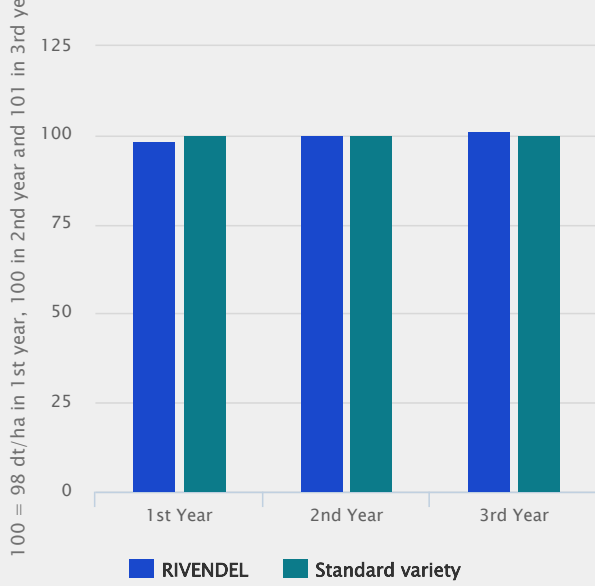
Technical Specifications

- White clover
- Small-leaved Grazing Type
- Listed/recommended in EU
BA BY DE DK EST FR LIT NL RS
SI SK UK

Specification and ratings

Relative drymatter yield

Source: Results from official trials in Denmark showing the drymatter yield



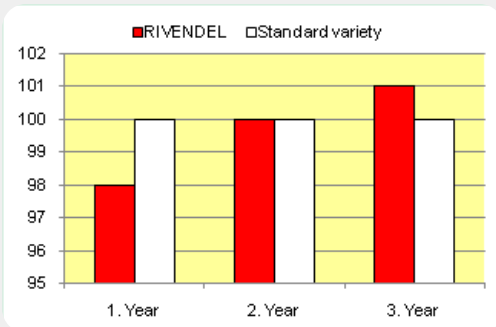
Sclerotinia average all cuts

Low score = resistant. Source NIAB.

Sclerotinia average all cuts

Check variety 1 medium size leaves	2.5
Check variety 2 medium/large leaved	1.8
Check variety 3 small-leaved	2.8
RIVENDEL small-leaved	1.5

Results from off. trials in Denmark showing the drymatter yield



100=98 dt/ha in 1st year, 100 in 2nd year and 101 in 3rd year

Ratings

Scale 1-9, where 9 = best or most pronounced

