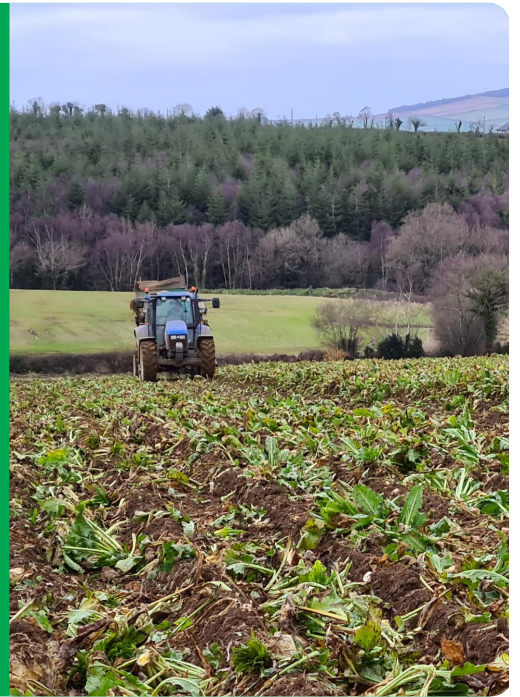


ENERGARCI

Beta vulgaris

- 5 % higher yield than Marshall
- Smooth root with low dirt tare
- 17-18 % DM in root
- White root colour
- Rhizomania tolerant



5 % Higher Yield

Energarcı is an improvement of the well known white fodder beet variety Marshall. The yield of root is increased by 5%, while the tops are slightly smaller. As an added benefit, Energarcı is Rhizomania tolerant.

Low Dirt tare & More than 20 ton DM pr. ha

Shallow rooting is another important characteristic of Energarcı. This results in low dirt tare at harvest and consequently a cleaner end-product.

Energarcı has in official trials shown capacity to produce more than 20 ton drymatter/ha in the root alone. The beet tops may add approximately 5-6 ton DM/ha.

For Biogas or forage production

Energarcı is ideal for forage as well as biogas, because the two most important characteristics, high yield and low dirt tare, are combined in this variety.

Technical Specifications

- Fodder beet
- Clean, smooth and high yield -
For forage and biogas -
Rhizomania tolerant.
- Listed/recommended in EU
DE FR UK

High yield and excellent quality

* Scale 1-4, 4 most smooth. National variety testing Denmark, 2010-11

	%DM in root	Smoothness*	% dirt tare	Height above ground, mm	Yield, ton DM/ha	Relative
Energarcí	17,7	3	3,8	75	20,45	106
Magnum	19,2	2,8	3,7	76	19,23	100

Ratings

Scale 1-9, where 9 = best or most pronounced

